

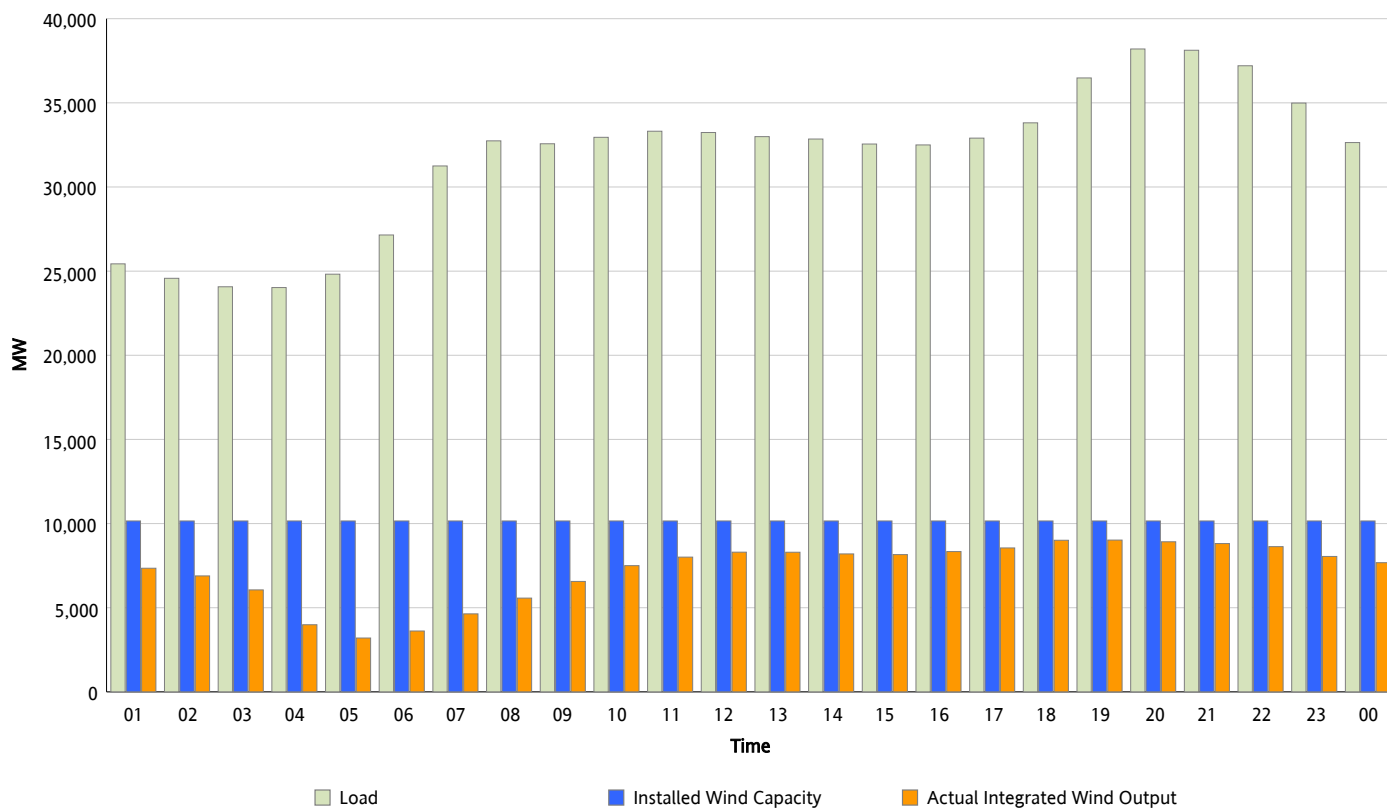


## ERCOT Grid Operations

### Wind Integration Report : 02/25/2013

Peak Load	38,202 MW
Load Peak Hour (HE)	20
Wind Over Peak	8,918 MW
Wind Record 02/09/13	9,481 MW
Max Wind Value*	9,311 MW
Wind Peak Time	18:00
Wind Integration %	26.74 %

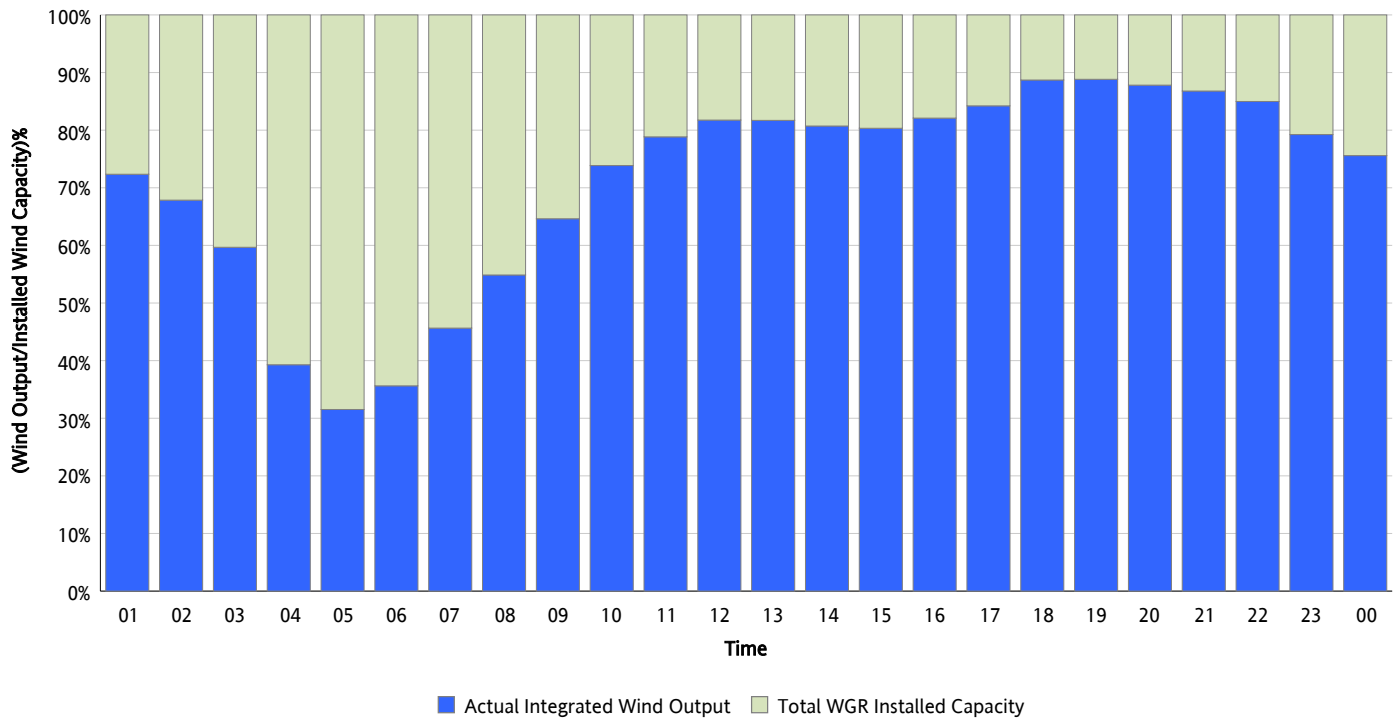
**Hourly Average Actual Load vs. Actual Wind Output**  
**02/25/2013**



*\* Wind Record and Wind Max represent instantaneous values and the rest of the values are integrated over the hour*

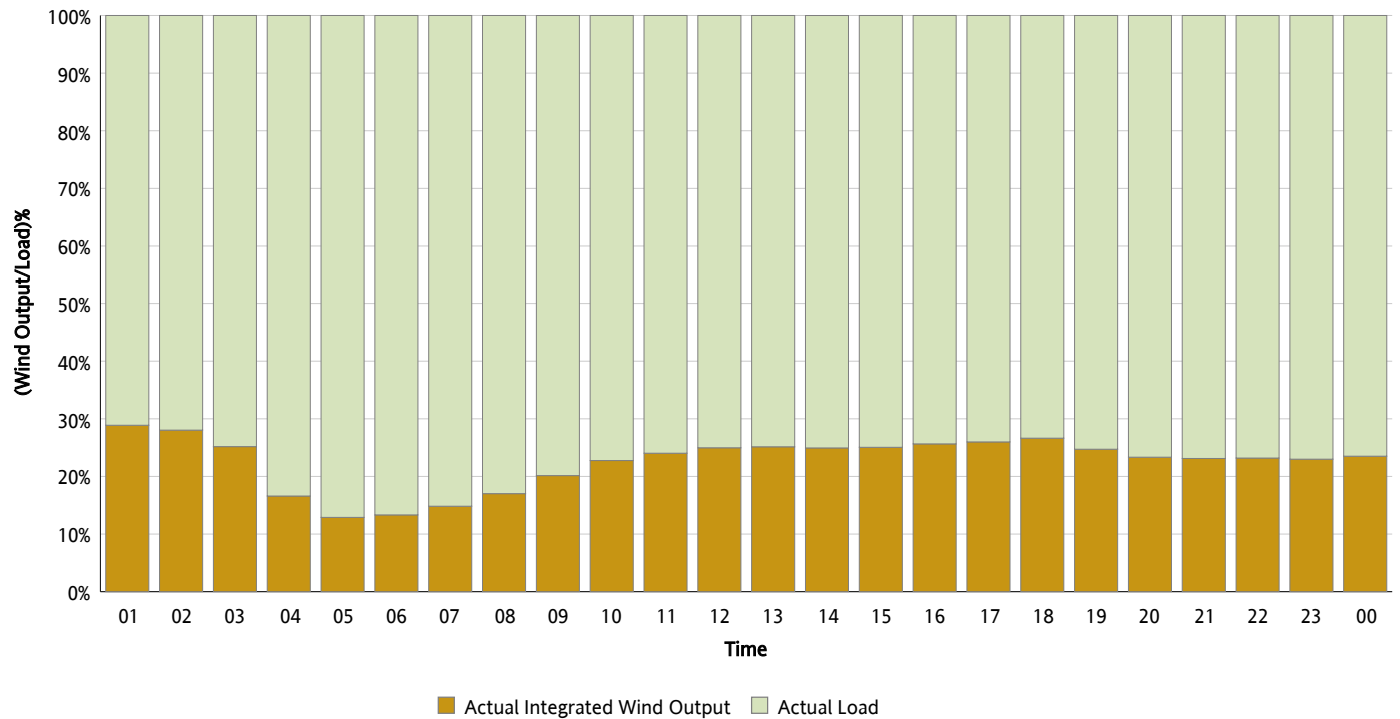
## Actual Wind Output as a Percentage of the Total Installed Wind Capacity

02/25/2013



## Actual Wind Output as a Percentage of the ERCOT Load

02/25/2013



## ERCOT Load vs. Actual Wind Output

02/18/2013 - 02/25/2013

